



**APOLLO**  
Windows & Doors

# Window Catalog



**BUILT TO LAST, DESIGNED TO IMPRESS**



A-Apollo Windows & Doors is a trusted leader in the fenestration and construction industry, with 35 years of experience providing high-quality windows, doors, and related services.

Specializing in custom solutions for residential and commercial projects, our company is committed to delivering superior craftsmanship, energy-efficient products, and exceptional customer service.

## Contact

Phone: (403) 568-0777

Website: [www.apollowindows.ca](http://www.apollowindows.ca)

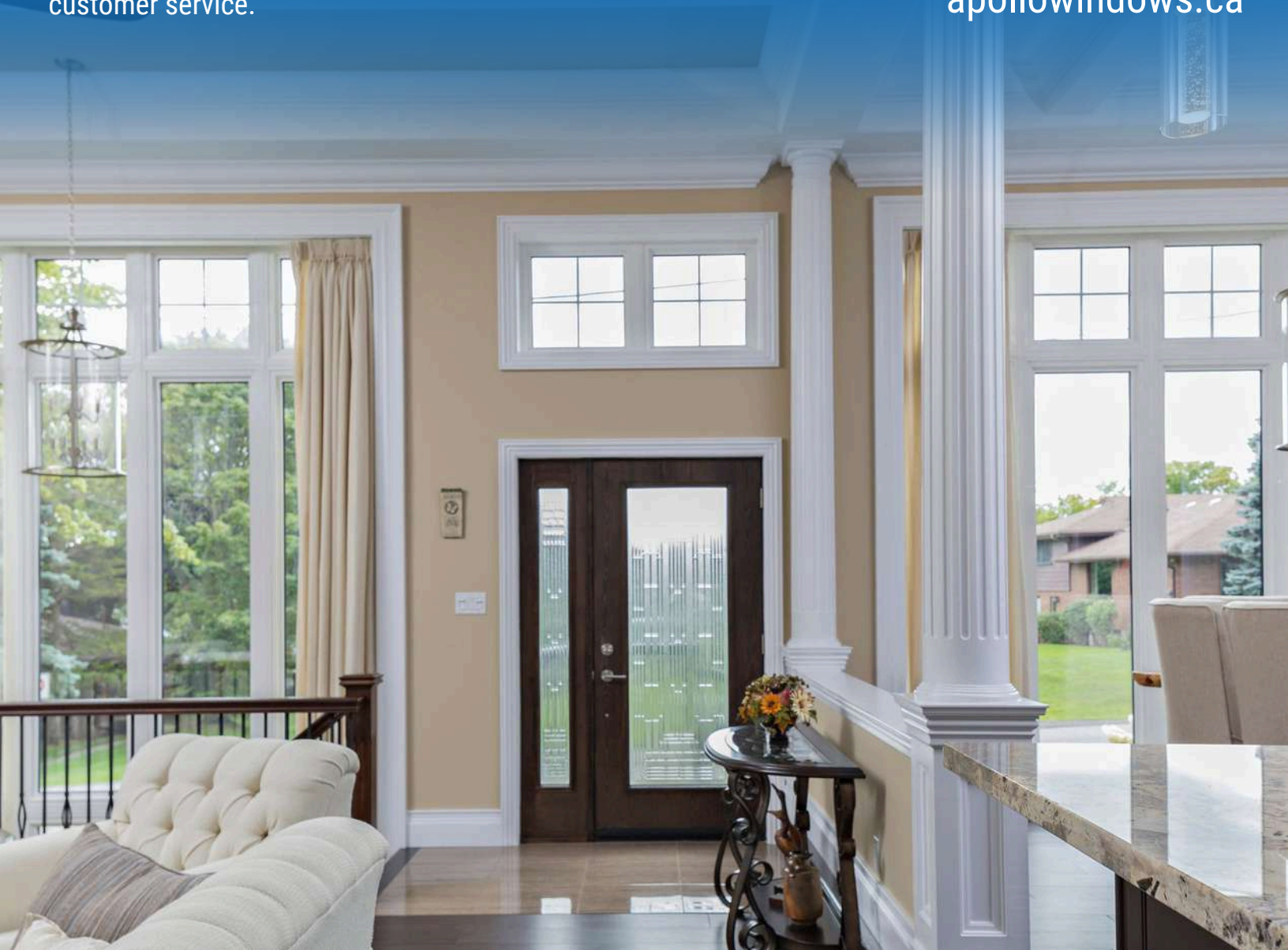
Email: [sales@apollowindows.ca](mailto:sales@apollowindows.ca)

## Office

3530 32 ST NE #26

Calgary, AB T1Y 6G7

[apollowindows.ca](http://apollowindows.ca)





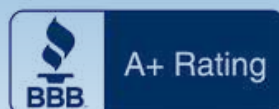
# Made in Alberta, Designed for Canada



By manufacturing in Calgary, we ensure that our windows and doors are built to withstand the demands of the Canadian climate. This allows us to rigorously test and refine every product for durability, energy efficiency, and year-round performance. Producing close to home also means reduced lead times, allowing for faster delivery without compromising on quality.



Operating in Alberta gives us the flexibility to offer greater customization options, quickly adapt to market trends, and maintain strong partnerships with regional suppliers. By keeping production local, we not only support the economy through job creation but also uphold the highest standards of craftsmanship. As a proudly Canadian company, we are committed to quality, innovation, and the values of reliability and resilience that define our nation.





# BUILT TO LAST, DESIGNED TO IMPRESS



A window is more than just a view, it's a vital expression of a home's character. As a connection between interior and exterior, it shapes light, mood, and atmosphere while revealing the home's unique style.

Thoughtfully designed windows enhance curb appeal, frame beautiful moments, and create a sense of openness and comfort, making them a perfect balance of function and personality.

# UNIQUE FRAMES FOR EVERY ROOM

The perfect window, tailored to your style and space



## Single Hung

A timeless choice, single hung windows feature a fixed top sash and a bottom sash that slides vertically. They're space-saving, secure, and easy to clean. Ideal for traditional homes or tight exterior areas.



## Casement

Hinged at the side and opening outward with a crank, casement windows offer excellent ventilation and an unobstructed view. Their tight seal makes them one of the most energy-efficient options available.



## Horizontal Slider

These windows open smoothly side to side, offering a sleek, modern look and easy operation. They're perfect for wide window openings and work well in contemporary or transitional homes.



## Hopper

Hopper windows are bottom-hinged and tilt inward, making them a smart solution for basements or bathrooms. Compact and secure, they provide ventilation in small or low-wall spaces.



## Picture

Picture windows are fixed and don't open, but they offer expansive views and let in plenty of natural light. They're great for showcasing scenery while improving energy efficiency with fewer moving parts.



## Awning

Awning windows are hinged at the top and open outward, allowing ventilation even during light rain. Often placed higher on walls or paired with other window styles, they bring in airflow without sacrificing privacy.







# WHAT YOUR HOME DESERVES

Made from high-quality PVC (polyvinyl chloride), our vinyl window frames offer excellent thermal insulation. Moreover, they require little maintenance and resist moisture and decay. Whether you're renovating or building new, vinyl windows provide a clean, modern look with lasting performance.

In addition, their energy efficiency helps reduce utility costs year-round. Plus, customizable styles, colors, and configurations make it easy to match any architectural design.

## Exclusive PVC compound

Gives the window better resistance to impacts and discoloration.

## Multilayer weatherstripping

Provides the highest insulation. No drafts or energy loss. Easily replaceable if needed thanks to the groove.

## Neat appearance and durability

Add value to any home.

## Fusion-welded corners

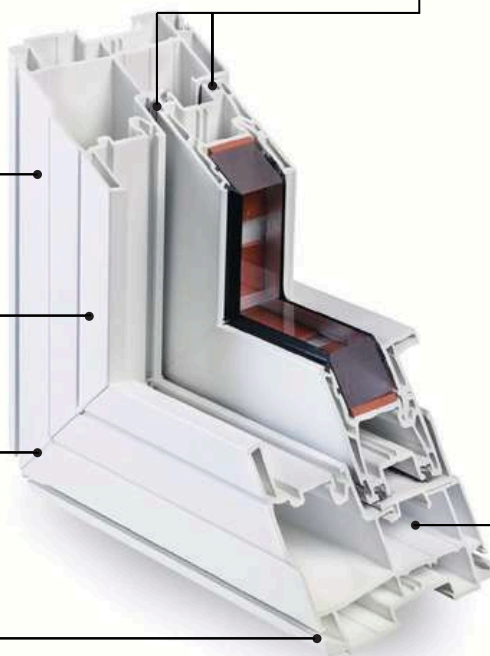
Give a more attractive appearance, enhance solidity, and eliminate the need for adhesives and sealants. 100% watertight and airtight.

## Optional integrated nailing fin

Guarantees a perfect fit and prevents water infiltration in the walls.

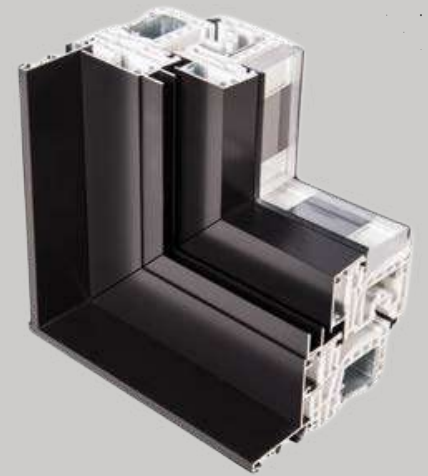
## Multichamber design

More chambers than any competing product. Provides superior thermal insulation and sound reduction. Guaranteed outstanding resistance to warping and crushing (minimizing the likelihood of seal failure and gas loss).

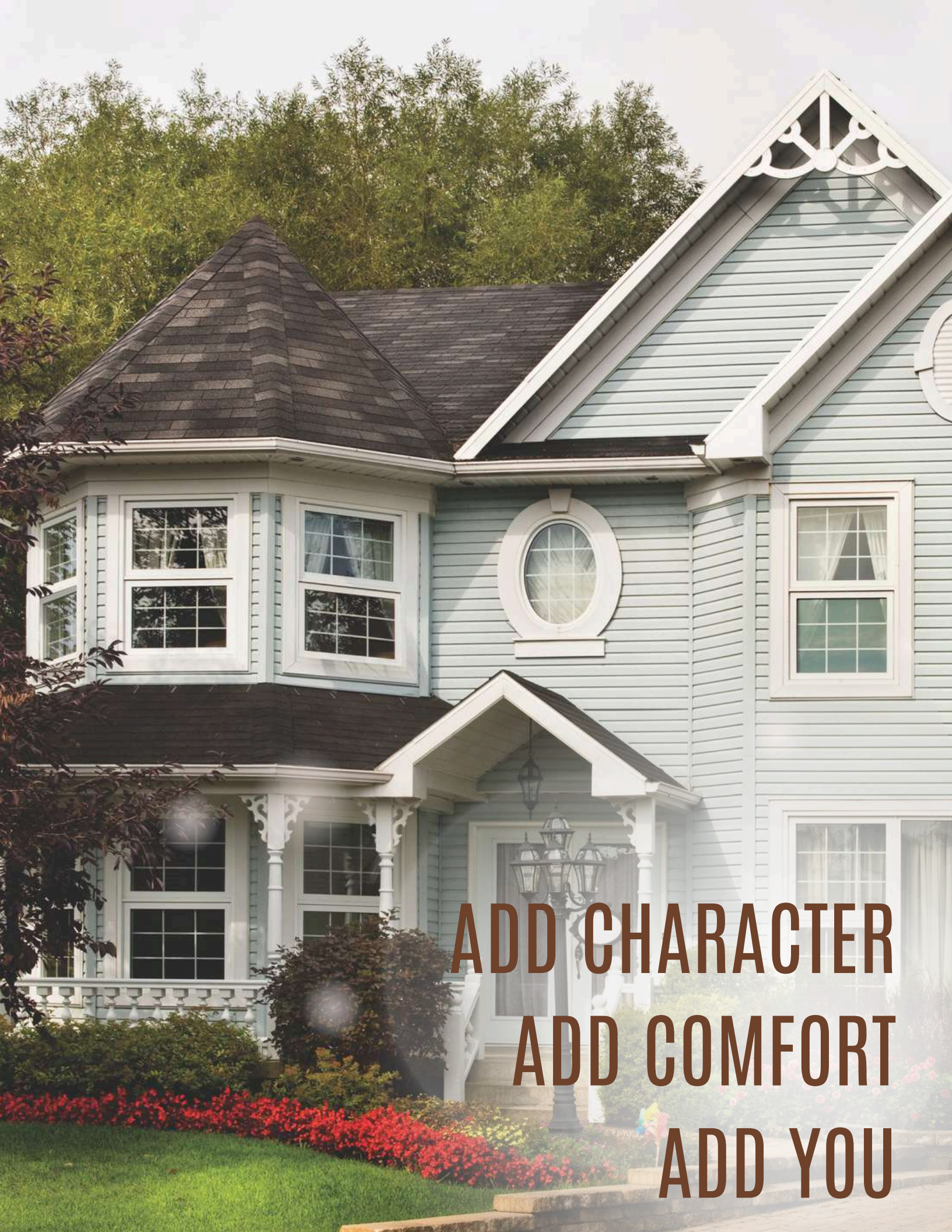


# HYBRID WINDOWS THE BEST OF BOTH WORLDS

Experience the perfect fusion of durability, energy efficiency, and aesthetic appeal with our hybrid windows. Combining a robust **aluminum exterior** with a thermally efficient **PVC interior**, these windows are designed to withstand Calgary's diverse climate while enhancing your home's comfort and style.







**ADD CHARACTER**  
**ADD COMFORT**  
**ADD YOU**



# GLASS PRIVACY OPTIONS

Whether you want to let in light without sacrificing privacy, or simply add a subtle design element to your windows, our decorative glass options offer both beauty and function. Choose the finish that suits your space best:

## Pinhead

Pinhead glass has a subtle, dotted texture that gives a slightly vintage look while still delivering privacy and light diffusion. The small raised pattern breaks up visibility, making it difficult to see through while allowing light to flow into the room. It's a great option for utility rooms, garage windows, or anywhere you want a bit of charm with practical coverage.

## Satin (Frosted)

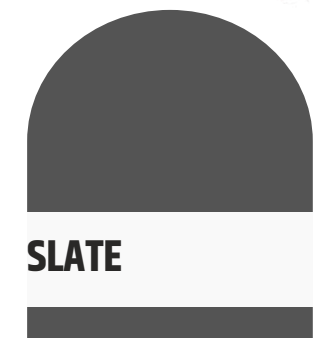
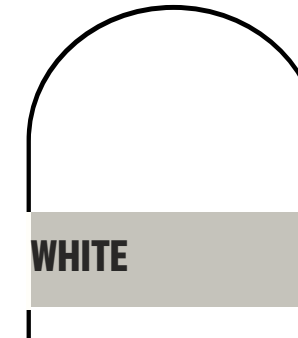
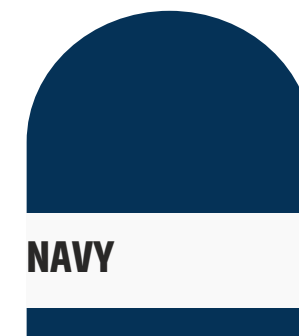
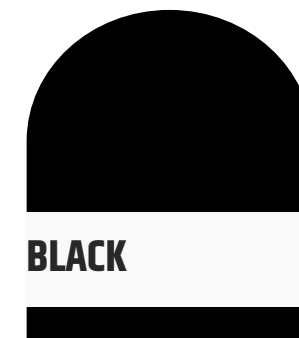
Satin, also known as frosted or etched glass, offers a clean, contemporary look with soft light diffusion and full daytime privacy. The smooth, matte finish allows natural light to pass through while obscuring the view from both sides. Ideal for bathrooms, entryways, or office spaces where discretion is key. Its modern aesthetic complements both minimalist and upscale interiors, adding privacy without sacrificing brightness.

## Rain

Rain glass features a textured surface that mimics the look of water streaks flowing down a windowpane. This style adds a decorative, spa-like touch while still providing excellent privacy. Light filters through softly, and the organic pattern offers visual interest without overwhelming the space. Rain glass is often chosen for bathroom windows or sidelights near front doors, striking a balance between design and function.

# MAKE IT YOURS

Your windows should reflect more than just light, they should reflect your style. With a wide range of color finishes available, you can tailor each window to suit the character of your home, inside and out. Below are some of our most popular colours, chosen by homeowners for their timeless appeal and seamless integration with a variety of architectural styles.



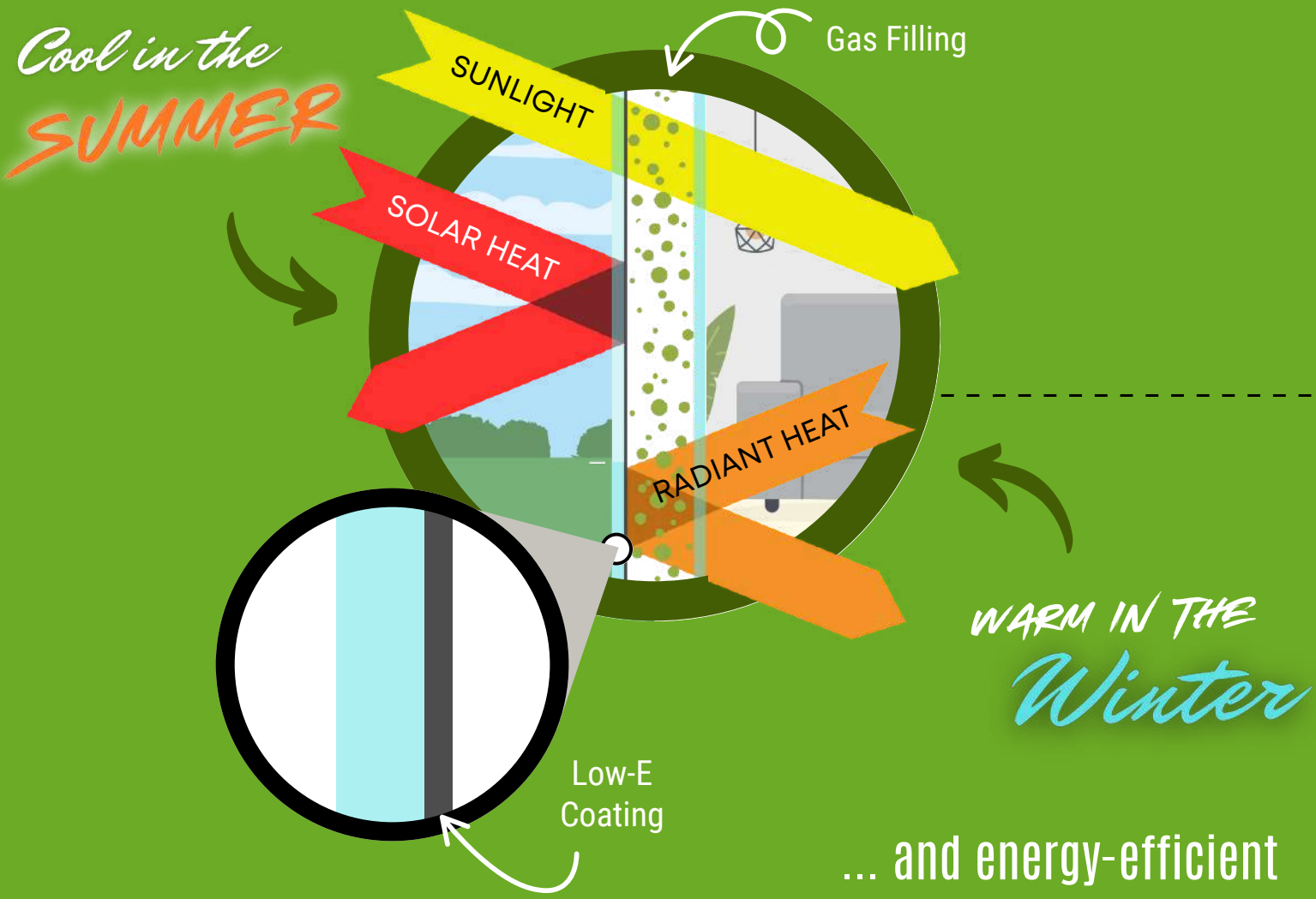
DESIGN YOUR OWN WINDOW  
(AND GET A FREE QUOTE!)



# DESIGNED FOR SAVINGS, ENGINEERED FOR COMFORT

Our high-performance windows are designed with your comfort and efficiency in mind. Every unit features Low-E (low emissivity) glass and argon or krypton gas filling between the panes, an advanced combination that helps regulate your indoor climate year-round. Whether it's blazing heat or frigid cold outside, your home stays cozy and your energy bills stay under control.

Keep your home...



... and energy-efficient  
all year long.

*What are  
the benefits?*



**Lower Energy Bills**  
Our insulated glass reduces heating and cooling costs by minimizing energy loss

**Eco-Friendly Choice**  
Using less energy reduces your home's carbon footprint

**Increased Home Value**  
Energy-efficient upgrades are a smart investment that future buyers appreciate

**Improved Indoor Comfort**  
By reducing heat loss in winter and blocking excess heat in summer, create a balanced indoor environment

**Noise Reduction**  
Multi-pane glass with gas filling adds a layer of sound insulation.

## What Makes Our Glass Different?

Low-E stands for low emissivity, a nearly invisible metallic coating applied to the surface of the glass. It reflects infrared (heat) energy back to its source while allowing visible light through, keeping the heat inside during winter and outside during summer. Between the panes, we use argon or krypton gas, which is denser than air. This acts as a thermal barrier, improving insulation and reducing heat transfer.





# DOUBLENATURE®

## THE BENEFITS OF PVC, THE APPEARANCE OF WOOD.



DOUBLENATURE® offers the rich, natural look of wood with the durability and low maintenance of premium PVC. Whether you're upgrading windows or doors, inside or out, this finish adds timeless style and cozy character to any space.

Crafted to pair beautifully with a variety of materials and textures, we deliver a refined woodgrain look that's as versatile as it is realistic, setting a new standard in PVC design. It's where modern innovation meets classic appeal.



DOUBLENATURE® is available for interior as well as exterior parts of the following products\*:

- Casement windows
- Awning windows
- Single or double hung windows
- Slider windows
- Fixed or panoramic windows
- Bay and bow windows
- Patio doors

\*Availability may vary based on current stock.

WALNUT STAIN

MAHOGANY STAIN

CHERRY STAIN

REDWOOD STAIN

PECAN GOLD STAIN

OAK STAIN



# AFFORDABLE FINANCING

Whether you're upgrading to energy-efficient windows or installing a beautiful new front door, it's good to know that your project doesn't have to wait.

Our financing partner offers secure, simple, and flexible payment options designed for home improvement projects of all sizes.

- Easy online application in minutes
- Instant pre-approval, right on the spot
- No down payment required

Apply now – it's fast, secure, and completely confidential!



<https://apollowindows.ca/financing/>



# THE APOLLO FACTOR

## Made in Calgary

Our windows and doors are built locally supporting Canadian jobs and local suppliers.

## In-House Manufacturing

We control the process from design to delivery. You can visit our factory when checking our showroom.



## Designed for You

From custom sizes to colors, grilles, and glass: your vision guides our production.

## Affordable Upgrades

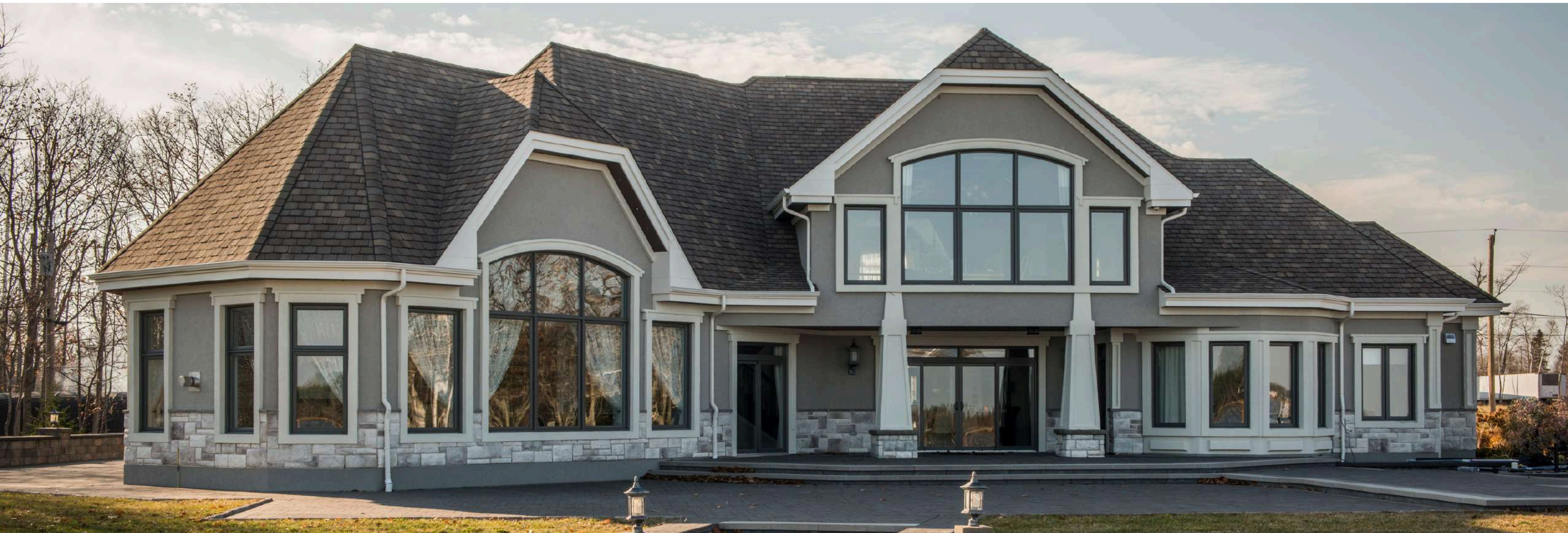
We offer a range of flexible payment plans and financing to make your home improvement manageable.

## Energy-Efficiency

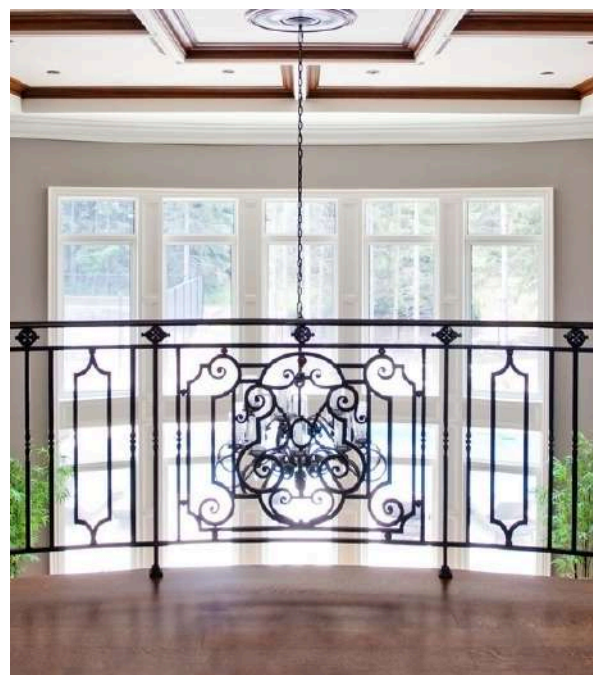
Our products help reduce heat loss, save on energy, and boost year-round comfort.

## Customer Service

The assigned support team or individual investigates the reported issue or fulfills the requested service.









# Contact

---

Phone: (403) 568-0777

Website: [www.apollowindows.ca](http://www.apollowindows.ca)

Email: [sales@apollowindows.ca](mailto:sales@apollowindows.ca)

# Office

---

3530 32 ST NE #26

Calgary, AB T1Y 6G7

[apollowindows.ca](http://apollowindows.ca)



**APOLLO**  
Windows & Doors